



Application Note:

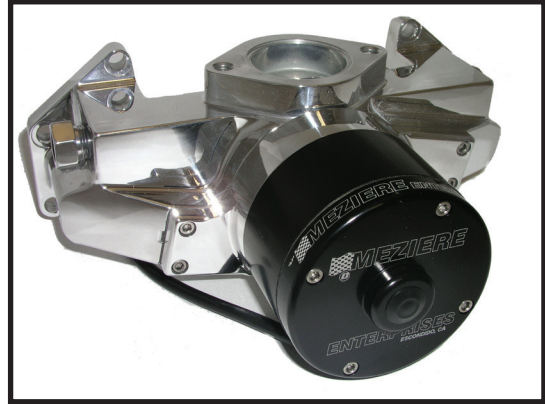
WP106 fits BB Mopar 361, 383, 400, 413, 426 and 440 engines.

Installation Instructions WP106 BB Mopar Centrifugal 12V Pump

In The Box:

- 1 Electric Pump WP106
- 1 WPMTEMP(X) for mechanical gauge sender
- 1 WPM38P(X) for electric gauge sender
- 6 3/8-16 x 1.25" Long SSSHCS bolts and washers
- 1 1" NPT Plug
- 2 Flange Gaskets WPG106
- 1 Wiring harness w/ 20 amp fuse
- 2 Contingency Decals

The inlet fitting must be ordered separately to match your lower radiator hose type and size.



To Do the Job You Will Need:

- Scraper or wire brush
- Brake Cleaner
- Sealant; Form-a-gasket (Aviation), Form-A-Gasket 2 (Non-Hardening), Gaskacinch or RTV silicone
- Thread sealant; RTV silicone or liquid pipe thread sealant
- 5/16" hex socket
- 1/2 drive ratchet
- Spanner wrench

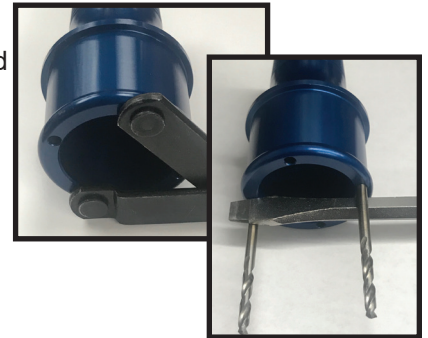
Mounting:

Remove stock water pump. Clean and degrease gasket area. Be sure to coat both sides of the gasket with recommended sealant. Tack gaskets to back of the Meziere pump and align gasket to bolt holes. Apply a small amount of sealant to the threads of the hardware provided to prevent leaks. Bolt pump in place.

Run all six bolts up snug before tightening to recommended 25 ft./ lbs. Note the WP106 water pump requires a 54mm thermostat. Early Chevrolet style.

Inlet:

Our hose inlets are designed to be tightened using a spanner wrench. We understand that not every mechanic owns a spanner wrench. The job can be done using a pair of drill bits placed in the spanner holes and a screwdriver bridged across the drill bits (see photo on the right). **It is necessary to use a small amount of RTV silicone or liquid pipe thread sealant on the 1" pipe threads of the inlet and plug.**



Wiring the Pump:

Use the fused harness supplied with the pump.

The **BLUE** wire should be connected to a 12 volt positive (+) switched source.

The **BLACK** wire should be connected to ground.

Supply and ground wires should be 14 gauge minimum. All switches should be rated at 20 amps or better.

WARNING: Not using a protection circuit (Fused circuit) will void your warranty.

Startup / Running:

Fill the cooling system. Replace fill cap and turn on pump. Remove fill cap and top off coolant level. Recheck level after one heat cycle. **DO NOT RUN PUMP DRY for more than a few seconds.**

Beauty Tip:

Your pump comes to you polished and waxed. Occasional waxing will allow dirt or debris to be wiped right off the pump and offer some protection from UV light (the anodized color on your pump can fade from prolonged exposure to sunlight).

California Proposition 65 Warning: Please see reverse side for Prop 65 information.

Meziere Enterprises 220 S. Hale Ave. Escondido, CA 92029 760-746-3273

California Proposition 65 Warning

WARNING: This product contains chemicals known to the State of California to cause cancer and birth defects or other reproductive harm.

WARNING: Motor vehicles contain fuel, oils and fluids, battery posts, terminals and related accessories which contain lead and lead compounds and other chemicals known to the State of California to cause cancer, birth defects and other reproductive harm. These chemicals are found in vehicles, vehicle parts and accessories, both new and as replacements. When being serviced, these vehicles generate used oil, waste fluids, grease, fumes and particulates, all known to the State of California to cause cancer, birth defects, and reproductive harm.

For background on the new Proposition 65 warnings, see:
<https://www.p65warnings.ca.gov/new-proposition-65-warnings>

Proposition 65 and its regulations are posted at:
<https://oehha.ca.gov/proposition-65/law/proposition-65-law-and-regulations>

To give Meziere notice of an alleged violation of California Health and Safety Code Section 25249.5 or 25249.6, you must send notice to:
meziere@meziere.com