

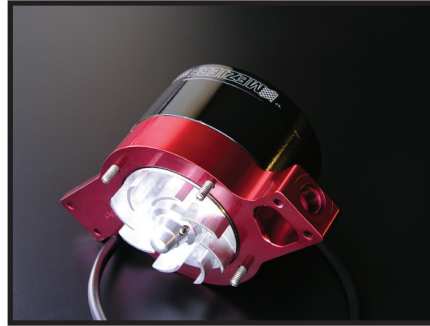


## Installation Instructions

### WP155 Replacement 12V Pump Center Section

#### In The Box:

- |   |                                       |
|---|---------------------------------------|
| 1 | Center Section WP155                  |
| 4 | 10-24 x 3-1/8" long SSSHCS            |
| 2 | 10-24 x 1/2" long SSSHCS              |
| 2 | 10-24 x 1" long SSSHCS                |
| 1 | Gasket, Center section to body WPG001 |
| 1 | Wiring harness w/ 20 amp fuse         |
| 2 | Contingency Decals                    |



#### To Do the Job You Will Need:

- Scraper or razor blade
- Sealant; Form-a-gasket (Aviation), Form-A-Gasket 2 (Non-Hardening), Gaskacinch or RTV silicone
- 5/32" hex socket

#### Removal:

1. Drain the cooling system.
2. Remove the eight 10-24 screws with a 5/32 hex socket or wrench.
3. Identify the slot on the body intended to assist in separating the front plate from the main body. Hold the center section with one hand and insert a small screwdriver into the slot. Pry the center section loose.



#### Installation:

1. Clean and degrease gasket area.
2. Coat both sides of the gasket with recommended sealant.
3. Apply Loctite 290 (green) or Loctite 242 (blue) to the 10-24 screws.
4. Tack gasket to back of the Meziere center-section. Use the long screws to hold the gasket in place.
5. Start all eight screws
6. Run all screws up snug, and then tighten from the center out.
7. Allow time for sealant to set.
8. Connect wiring harness.

#### Wiring the center section:

Use the fused harness supplied with the center section.

The **BLUE** wire should be connected to a 12 volt positive (+) switched source.

The **BLACK** wire should be connected to ground.

Supply and ground wires should be 14 gauge minimum. All switches should be rated at 20 amps or better.

**WARNING: Not using a protection circuit (Fused circuit) will void your warranty.**

#### Startup / Running:

Fill the cooling system. Replace fill cap and turn on pump. Remove fill cap and top off coolant level. Recheck level after one heat cycle. **DO NOT RUN PUMP DRY for more than a few seconds.**

#### Beauty Tip:

Your center section comes to you polished and waxed. Occasional waxing will allow dirt or debris to be wiped right off the pump and offer some protection from UV light (the anodized color on your pump can fade from prolonged exposure to sunlight).

California Proposition 65 Warning: Please see reverse side for Prop 65 information.

California Proposition 65 Warning

**WARNING: This product contains chemicals known to the State of California to cause cancer and birth defects or other reproductive harm.**

**WARNING:** Motor vehicles contain fuel, oils and fluids, battery posts, terminals and related accessories which contain lead and lead compounds and other chemicals known to the State of California to cause cancer, birth defects and other reproductive harm. These chemicals are found in vehicles, vehicle parts and accessories, both new and as replacements. When being serviced, these vehicles generate used oil, waste fluids, grease, fumes and particulates, all known to the State of California to cause cancer, birth defects, and reproductive harm.

For background on the new Proposition 65 warnings, see:  
<https://www.p65warnings.ca.gov/new-proposition-65-warnings>

Proposition 65 and its regulations are posted at:  
<https://oehha.ca.gov/proposition-65/law/proposition-65-law-and-regulations>

To give Meziere notice of an alleged violation of California Health and Safety Code Section 25249.5 or 25249.6, you must send notice to:  
[meziere@meziere.com](mailto:meziere@meziere.com)