

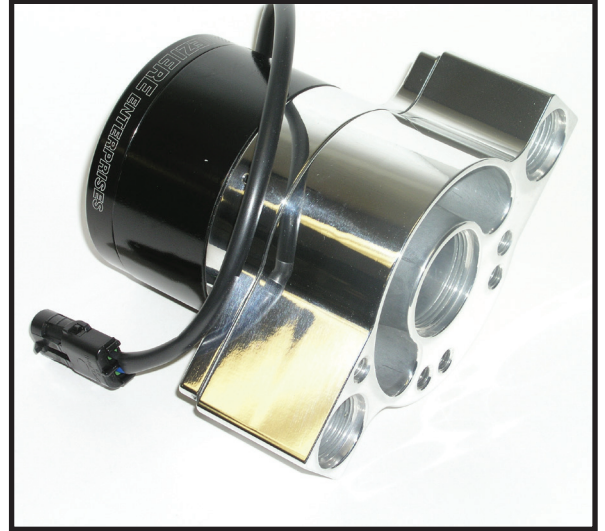


WP316 Centrifugal 12V pump High Flow Universal Remote Mount

In The Box:

- 1 Electric Pump WP316
- 1 Weld Tab WP85
- 1 Wiring harness w/ 20 amp fuse
- 2 3/8"-16 x 3/8" SSSHCS
- 2 3/8" AN Washers
- 2 Contingency decals

The inlet and outlet fittings must be ordered separately to match your hose connection type.



To Do the Job You Will Need:

- 2 x #12AN outlet fittings
- 1 x WN series inlet fitting (suggested WN0033S)
- 5/16" hex socket or wrench
- Plumbing (rubber or braided hose and fittings)
- Electrical wiring kit (crimps and terminals)
- Fabrication skill / capability for mounting.

Mounting:

This pump is designed to be frame or bulkhead (engine plate) mounted. The pump can be oriented several different ways. **Avoid mounting with motor angled straight up or straight down, (this could trap air in the pump chamber).**

Plumbing:

WP316 features a -20AN O-ring inlet to maximize performance. The outlets are # 12 AN. See below for a list of compatible fittings.

Inlet Fitting Options:

<u>Hose Style / Size</u>	<u>Meziere Part #</u>
Hose 1-1/4"	WN0031
Hose 1-1/2"	WN0032
Hose 1-3/4"	WN0033
AN -16	WN0040
AN -20	WN0041
AN -24	WN0044
Wiggins 1.50" Tube	WN0056
Wiggins 1.75" Tube	WN0057

Outlet Fitting Options:

<u>Hose Style / Size</u>	<u>Meziere Part #</u>
AN -08	WP12008
AN-10	WP12010
AN-12	WP12012
AN-16	WP12016
Hose 3/4"	WP12034
Hose 1"	WP12100
Hose 1-1/4"	WP12125
Hose 1-1/2"	WP12150
Hose 1-3/4"	WP12175

Wiring the Pump:

Use the fused harness supplied with the pump.

The **BLUE** wire should be connected to a 12 volt positive (+) switched source.

The **BLACK** wire should be connected to ground.

Supply and ground wires should be 14 gauge minimum. All switches should be rated at 20 amps or better.

WARNING: Not using a protection circuit (fused circuit) will void your warranty.

Startup / Running:

Fill the cooling system. Replace fill cap and turn on pump. Remove fill cap and top off coolant level. Recheck level after one heat cycle. **DO NOT RUN PUMP DRY for more than a few seconds.**

Beauty Tip:

Your pump comes to you polished and waxed. Occasional waxing will allow dirt or debris to be wiped right off the pump and offer some protection from UV light (the anodized color on your pump can fade from prolonged exposure to sunlight).

California Proposition 65 Warning: Please see below for Prop 65 information.

California Proposition 65 Warning

WARNING: This product contains chemicals known to the State of California to cause cancer and birth defects or other reproductive harm.

WARNING: Motor vehicles contain fuel, oils and fluids, battery posts, terminals and related accessories which contain lead and lead compounds and other chemicals known to the State of California to cause cancer, birth defects and other reproductive harm. These chemicals are found in vehicles, vehicle parts and accessories, both new and as replacements. When being serviced, these vehicles generate used oil, waste fluids, grease, fumes and particulates, all known to the State of California to cause cancer, birth defects, and reproductive harm.

For background on the new Proposition 65 warnings, see:

<https://www.p65warnings.ca.gov/new-proposition-65-warnings>

Proposition 65 and its regulations are posted at:

<https://oehha.ca.gov/proposition-65/law/proposition-65-law-and-regulations>

To give Meziere notice of an alleged violation of California Health and Safety Code Section 25249.5 or 25249.6, you must send notice to:

meziere@meziere.com