



WP726/ WP727 Brushless Inline Remote Mount Water Pump

In the box:

- 1 Pump
- 1 Wiring harness w/ 20 amp fuse
- 2 Contingency stickers

To do the job you will need:

- * Light grease or Oil
- * Wire Crimper / Stripper
- * Solder less Crimp Terminals
- * Ability to weld / fabricate a mounting plate for your pump.

Installation:

- Remove the pump from the package and inspect for any shipping damage.
- Mount the pump. Ideally the motor shaft should be horizontal and the outlet port should be above the inlet port. Other orientations are acceptable. Contact us if you are unsure or need to mount the pump in an orientation that is not the recommended one.
- Complete the plumbing by making the connection to the pump inlet and from the pump outlet port to the appropriate location on your system.
- **Wiring precaution: Connect the red wire to battery positive only and the black wire to battery negative only. Do not reverse polarity!**
- Wire the pump to a 12 volt (24V for WP727) switched source making sure that a fuse or circuit breaker is utilized to protect from overloading the circuit. For a 12V system, this fuse should be 20 amps. The WP726 will operate from 11.0V- 18.0V. The WP727 will operate from 22V to 30V.

To complete the plumbing:

The inlet and outlet ports on this pump are -16 O-Ring Boss. We offer two AN and two hose sizes.

-12 AN - WP16012B
-16 AN - WP16016B



1" Smooth Hose- WP16100B
1 1/4" Smooth Hose- WP16125B



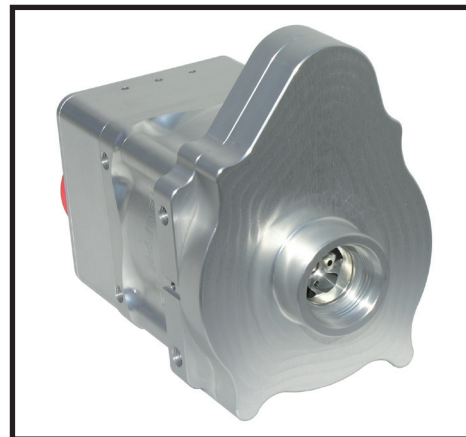
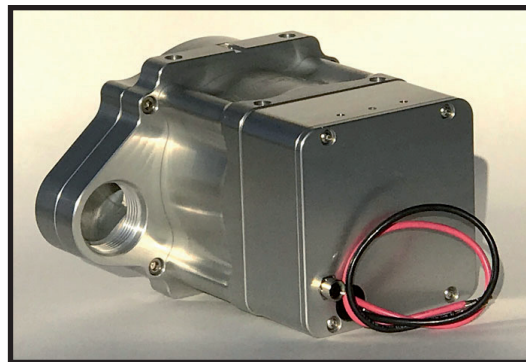
The fittings seal to the pump with an o-ring seal. Use a little grease or oil to lubricate the o-ring before installing the fitting.

Thank you for purchasing our product. Feel free to contact us if we can be of further assistance and enjoy your pump for a long, long time.

WARNING: NOT USING A FUSE CIRCUIT WILL VOID YOUR WARRANTY.

California Proposition 65 Warning: Please see reverse side for Prop 65 information.

220 S. Hale Ave. ~ Escondido, CA 92029 ~ (760) 746-3273 ~ MEZIERE@MEZIERE.COM



California Proposition 65 Warning

WARNING: This product contains chemicals known to the State of California to cause cancer and birth defects or other reproductive harm.

WARNING: Motor vehicles contain fuel, oils and fluids, battery posts, terminals and related accessories which contain lead and lead compounds and other chemicals known to the State of California to cause cancer, birth defects and other reproductive harm. These chemicals are found in vehicles, vehicle parts and accessories, both new and as replacements. When being serviced, these vehicles generate used oil, waste fluids, grease, fumes and particulates, all known to the State of California to cause cancer, birth defects, and reproductive harm.

For background on the new Proposition 65 warnings, see:

<https://www.p65warnings.ca.gov/new-proposition-65-warnings>

Proposition 65 and its regulations are posted at:

<https://oehha.ca.gov/proposition-65/law/proposition-65-law-and-regulations>

To give Meziere notice of an alleged violation of California Health and Safety Code Section 25249.5 or 25249.6, you must send notice to:

meziere@meziere.com