



## WP728/ WP729 Brushless Tank Mounted Water Pump

### In the box:

- 1 Pump
- 1 Weld-In Mounting Flange
- 4 10-24 x 7/8" Screws
- 1 O-Ring
- 1 Wiring harness w/ 20 amp fuse
- 2 Contingency stickers

### To do the job you will need:

- \* 5/32 Allen wrench
- \* Light grease or Oil
- \* Wire Crimper / Stripper
- \* Solder less Crimp Terminals
- \* Ability to weld / fabricate mounting plate into your aluminum radiator.

### Installation:

- Remove the pump from the package and inspect for any shipping damage.
- Have a qualified welder / fabricator weld the supplied flange into your tank or radiator. The flange should replace the lower hose connection on the tank. Attach and weld the complete perimeter so that the flat side is facing out and the side with the large, rounded feature is inside the lower tank of the radiator. Check the weld for leaks before proceeding.
- From the motor side of the pump you will see a total of four screws, Remove the four 10-24 body screws. This will separate the main pump housing from the impeller cover plate.
- Use some light grease or oil to lubricate the o-ring. Install the o-ring into the groove feature of the cover plate.
- Using the four 10-24 screws, bolt the back plate to the welded flange on the radiator. Use appropriate torque to secure. Some type of thread locking compound is helpful here.
- Visually inspect the o-ring that seals between the main body and the cover plate. Make sure that it remains lubricated and seated well into its groove. Reassemble the main body to the cover plate with the four 10-24 screws that were removed in step 3. You may want to use some thread locking compound here as well.
- Complete the plumbing by making the connection from the pump outlet port to the appropriate location on your system.
- **Wiring precaution: Connect the red wire to battery positive only and the black wire to battery negative only. Do not reverse polarity!**
- Wire the pump to a 12 volt (24V for WP729) switched source making sure that a fuse or circuit breaker is utilized to protect from overloading the circuit. For a 12V system, this fuse should be 20 amps. The WP728 will operate from 11.0V- 18.0V. The WP729 will operate from 22V to 30V.

### To complete the plumbing:

The outlet port on this pump is -16 O-Ring Boss. We offer two AN and two hose sizes.

- 12 AN - WP16012B
- 16 AN - WP16016B



- 1" Smooth Hose- WP16100B
- 1 1/4" Smooth Hose- WP16125B



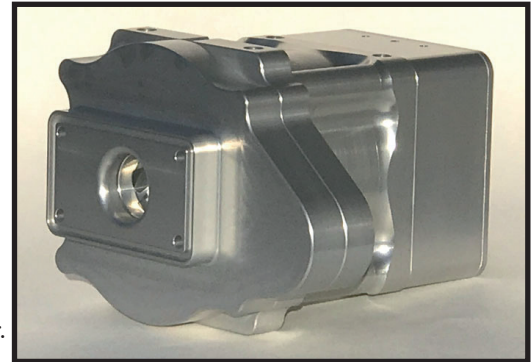
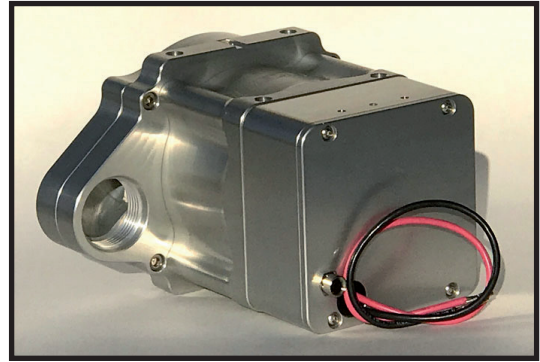
The fittings seal to the pump with an o-ring seal. Use a little grease or oil to lubricate the o-ring before installing the fitting.

Thank you for purchasing our product. Feel free to contact us if we can be of further assistance and enjoy your pump for a long, long time.

**WARNING: NOT USING A FUSE CIRCUIT WILL VOID YOUR WARRANTY.**

California Proposition 65 Warning: Please see reverse side for Prop 65 information.

**220 S. Hale Ave. ~ Escondido, CA 92029 ~ (760) 746-3273 ~ MEZIERE@MEZIERE.COM**



California Proposition 65 Warning

**WARNING: This product contains chemicals known to the State of California to cause cancer and birth defects or other reproductive harm.**

**WARNING:** Motor vehicles contain fuel, oils and fluids, battery posts, terminals and related accessories which contain lead and lead compounds and other chemicals known to the State of California to cause cancer, birth defects and other reproductive harm. These chemicals are found in vehicles, vehicle parts and accessories, both new and as replacements. When being serviced, these vehicles generate used oil, waste fluids, grease, fumes and particulates, all known to the State of California to cause cancer, birth defects, and reproductive harm.

For background on the new Proposition 65 warnings, see:

<https://www.p65warnings.ca.gov/new-proposition-65-warnings>

Proposition 65 and its regulations are posted at:

<https://oehha.ca.gov/proposition-65/law/proposition-65-law-and-regulations>

To give Meziere notice of an alleged violation of California Health and Safety Code Section 25249.5 or 25249.6, you must send notice to:

[meziere@meziere.com](mailto:meziere@meziere.com)